

Installation of intelligence toilet conceal cistern

Installation drawing for metal frame

1 Pre-drill the bottom hole of expansion bolt for the A wall

1 A $\text{Ø}10 \times 75$ A A

The iron frame can also be placed against the wall to make hole marks after drilling.

1 B B

You can also put the iron frame against the wall, and drill holes after making holes on the grounds. The footing can also be taken out and take the drilling position after adjusting the direction of assembly according to the field requirements.

2 Adjust the installation distance of the corner and pre-tighten it.

Adjust the height of the anchor and tighten it.

3 Lock anchor assembly nut.

Lock anchor expansion bolts.

① Insert the upper clamp upward into the hole of the iron frame;
 ② The upper clamp groove slides into the anti-falling groove of the iron frame;
 ③ Place the drainage between the upper and bottom clamp;
 ④ Bottom clamp snap to upper clamp.

Iron frame installation for wooden frame

1

A 600-620 1210-1250 B 445

Pre-drill the bottom hole of expansion bolt for the A wall

1 B B

Pre-drill the bottom hole of expansion bolt for the B ground.

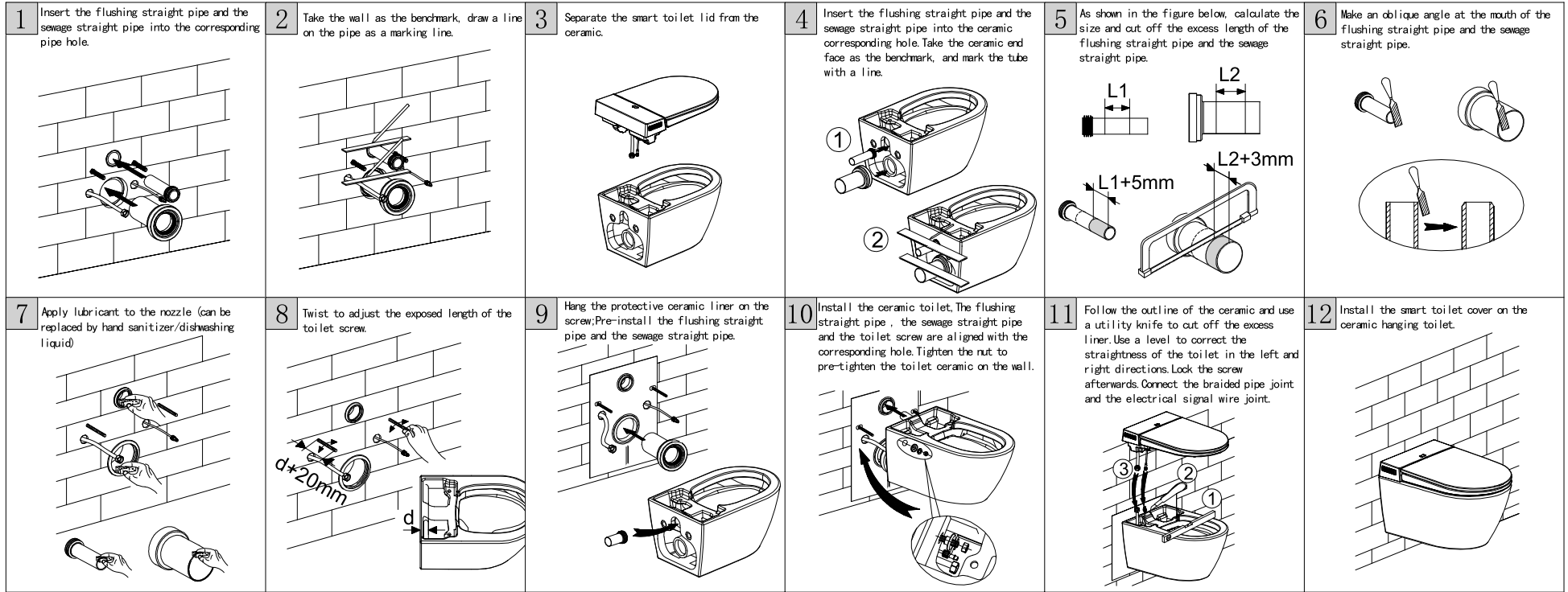
2 Adjust the height of the anchor and tighten it.

Both sides of the iron frame are connected and locked with the wooden frame (4 places)

3 Lock anchor expansion bolts.

① Insert the upper clamp upward into the hole of the iron frame;
 ② The upper clamp groove slides into the anti-falling groove of the iron frame;
 ③ Place the drainage between the upper and bottom clamp;
 ④ Bottom clamp snap to upper clamp.

Schematic diagram of wall-hung toilet installation:



Schematic diagram of sewage pipe laying:

